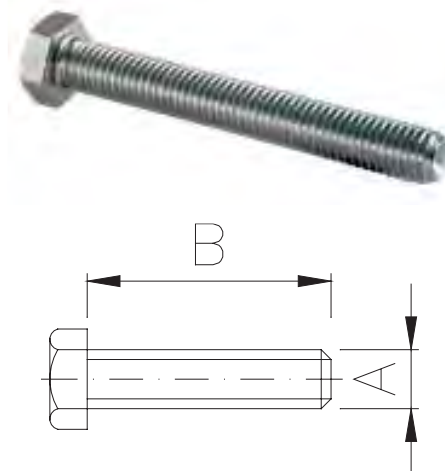


MAXIMA

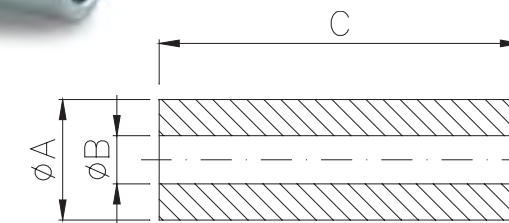
ACCESSORI
 ACCESSORIES

VITE TESTA ESAGONALE
 HEXAGON HEAD SCREW



A	B	ART. ZINCATO ZINC FINISHING	ART. INOX • STAINLESS STEEL
M6	40	222122ZB	2221270
M6	75	222202ZB	—
M8	45	222292ZB	2222970
M8	50	222302ZB	2223070
M8	55	222312ZB	2223170
M8	65	222332ZB	—
M8	105	222402ZB	2214070
M8	110	222412ZB	2214170
M10	65	220532ZB	2225370
M12	70	222672ZB	2226770
M12	80	222692ZB	2226970
M12	90	222712ZB	—

TUBETTO ASSALE IN ACCIAIO
 STEEL AXLE BUSHING



ØA	ØB	C	ART. ZINCATO ZINC FINISHING	ART. INOX • STAINLESS STEEL
8	6	31	140142ZB	—
12	8	30,5	141452ZB	1414570
12	8	37	141482ZB	1414870
12	8	41,5	141532ZB	1415370
12	8	51	141602ZB	—
15	10	51,5	142442ZB	1424470
15	12	51,5	142302ZB	1423070
15	12	61,5	142332ZB	1423470
20	13	51	1428620	—
20	13	61,5	142882ZB	—
20	18	61,5	—	1430070

DADO DIN 934
 NUT DIN 934



	M6	M8	M10	M12
ART. ZINCATO ZINC FINISHING	240091ZB	240121ZB	240151ZB	240181ZB
ART. INOX • STAINLESS STEEL	2400970	2401270	2401570	2401870

DADO TRIBLOCK
 GRIPPY DIN 934
 TRIBLOCK NUT
 DIN 934



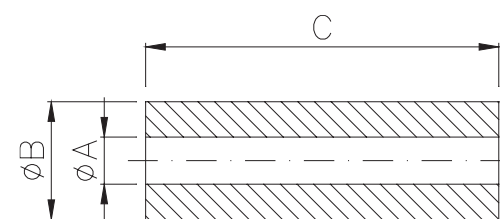
	M6	M8	M10	M12
ART. ZINCATO ZINC FINISHING	2425511	2425711	2425911	2426111

DADO
 AUTOBLOCCANTE
 DIN 985



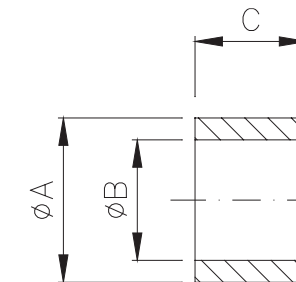
	M6	M8	M10	M12
ART. ZINCATO ZINC FINISHING	2415511	2415711	2415911	2416111
ART. INOX • STAINLESS STEEL	2415570	2415770	2415970	2416170

TUBETTI E DISTANZIALI IN NYLON
 POLYAMIDE BUSHING



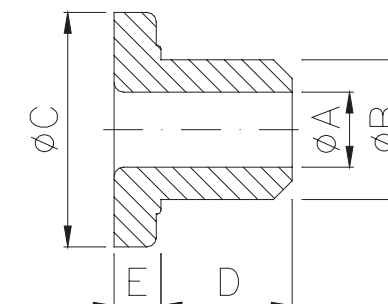
ØA	ØB	C	ART.
8	13	16	3252022
8	20	61	3259060
12	23	4,5	3253310
12	17,5	60	3259112
15	26	5	3253210

DISTANZIALE LATERALE IN ACCIAIO
 STEEL LATERAL BUSHING



ØA	ØB	C	ART. ZINCATO ZINC FINISHING
15	12	12,5	142102ZB
15	12	29	142202ZB
15	12	39	142252ZB
20	16	4,5	142582ZB
20	16	8	142622ZB
20	16	13	142662ZB
20	16	14,5	142682ZB
20	16	23	142762ZB
25	21	5	143102ZB
25	21	12	143152ZB
25	21	22,5	143242ZB

RIDUTTORE LATERALE IN NYLON
 POLYAMIDE REDUCTION BUSHING



ØA	ØB	ØC	D	E	ART.
8	12	20	11	1,5	3250522
8	12	20	11	3	3250422
8	12	20	11	6	3250722
8	15	25	13	5	3250622
10	15	25	15	3	3250822
10	15	25	17	5	3251022
10	15	25	15	8	3250922
12	15	25	16,5	3	3251222
12	15	25	15	8	3251122
12	15	25	15	13	3251322
12	20	30	19	2	3251422
12	20	30	19	5	3251522
12	20	30	19	10	3151622