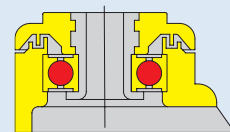


MAXIMA

SERIE H6-H7

SUPPORTO NYLON GRIGIO SETA RAL 7044
 GREY SILK POLYAMIDE CASTOR RAL 7044



PORTATA - LOAD CAPACITY
 Kg. 100 - 120

Ruota in gomma grigia antitraccia scorrevole su cuscinetti a sfere a tenuta stagna DIN 625. Disponibile anche con ruota antitraccia in poliuretano. Supporto stampato in nylon fibra di vetro girevole su cuscinetto a sfere di precisione DIN 625 2RS a tenuta stagna. Colore grigio seta RAL 7044.

Ruote sciolte vedi pag. 154
 156

Grey rubber tyre non-marking on water proof original ball bearings DIN 625. Available also with non-marking polyurethane wheel. Moulded fiber glass polyamide housing swivel on water proof precision ball bearing DIN 625 2RS. Grey silk colour RAL 7044.

Wheels only see pag. 154
 156



FRENO TOTALE
 TOTAL LOCK

FRENO TOTALE
 O DIREZIONALE
 TOTAL OR
 DIRECTIONAL LOCK



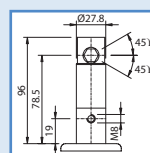
	mm	mm		mm	mm.	Kg. (da N)	ART.	ART.
RUOTA IN GOMMA GRIGIA ANTITRACCIA	100	32		145	38	90	H67SGFS100*	H77SGFS100*
	125	32		165	47	100	H67SGFS125*	H77SGFS125*
NON-MARKING GREY RUBBER TYRE	150	32		195	49	120	H67SGFS150*	H77SGFS150*
	200	32		251	67	120	H67SGFS200*	H77SGFS200*

RUOTA IN POLIURETANO ANTITRACCIA	100	32		145	38	100	H67SDLS100*	H77SDLS100*
	125	32		165	47	100	H67SDLS125*	H77SDLS125*
NON-MARKING POLYURETHANE TYRE	150	32		195	49	120	H67SDLS150*	H77SDLS150*
	200	32		251	67	120	H67SDLS200*	H77SDLS200*

Indicare la misura di fissaggio richiesta Es. H67SGFS100.12

Please indicate the requires size of fitting Es. H67SGFS100.12

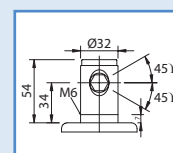
*MISURA ESAGONO *SIZE OF EXAGON



CAM Es. 11 ART. .11



CAM Es. 12 ART. .12



CAM Es. 11 ART. .11C10

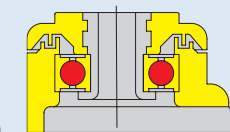


CAM Es. 12 ART. .12C10



SERIE H6-H7

SUPPORTO ANTISTATICO GRIGIO RAL 7005
 GREY ELECTRIC CONDUCTIVE CASTOR RAL 7005



PORTATA - LOAD CAPACITY
 Kg. 100 - 120

Ruota stampata in poliuretano termoplastico grigio ANTISTATICO antitraccia con parafile integrati scorrevole su cuscinetti a sfere di precisione. Supporto stampato in nylon ANTISTATICO girevole su cuscinetto a sfere di precisione DIN 625 2RS a tenuta stagna. Colore grigio RAL 7005.

Ruote sciolte vedi pag. 158

ELECTRIC CONDUCTIVE grey non-marking polyurethane wheel with thread-guards on water proof original ball bearings DIN 625. Moulded ELECTRIC CONDUCTIVE polyamide housing swivel on water proof precision ball bearing DIN 625 2RS. Grey colour RAL 7005.

Wheels only see pag. 158



FRENO TOTALE
 TOTAL LOCK

FRENO TOTALE
 O DIREZIONALE
 TOTAL OR
 DIRECTIONAL LOCK

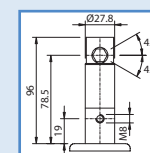


	mm	mm		mm	mm.	Kg. (da N)	ART.	ART.
RUOTA ANTISTATICA IN POLIURETANO ANTITRACCIA	100	32		145	38	100	T670DHS100*	T770DHS100*
	125	32		165	47	100	T670DHS125*	T770DHS125*
ELECTRIC CONDUCTIVE NON-MARKING POLYURETHANE TYRE	150	32		195	49	120	T670DHS150*	T770DHS150*
	200	32		251	67	120	T670DHS200*	T770DHS200*

Indicare la misura di fissaggio richiesta Es. T670DHS100.12

Please indicate the requires size of fitting Es. T670DHS100.12

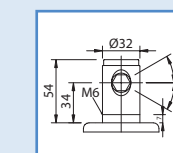
*MISURA ESAGONO *SIZE OF EXAGON



CAM Es. 11 ART. .11



CAM Es. 12 ART. .12



CAM Es. 11 ART. .11C10



CAM Es. 12 ART. .12C10

